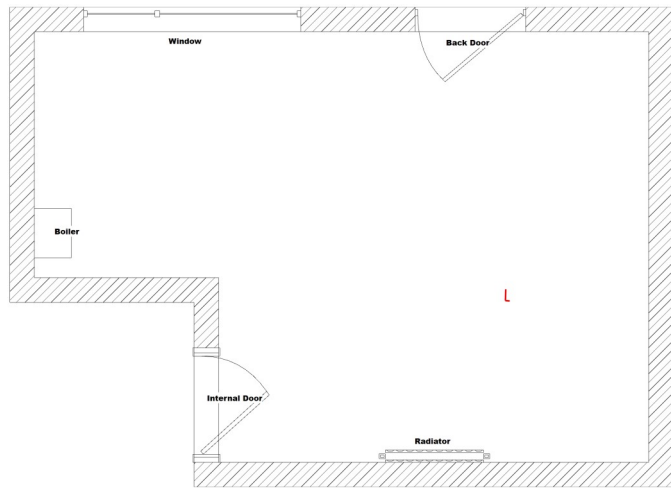


HOW TO MEASURE YOUR KITCHEN

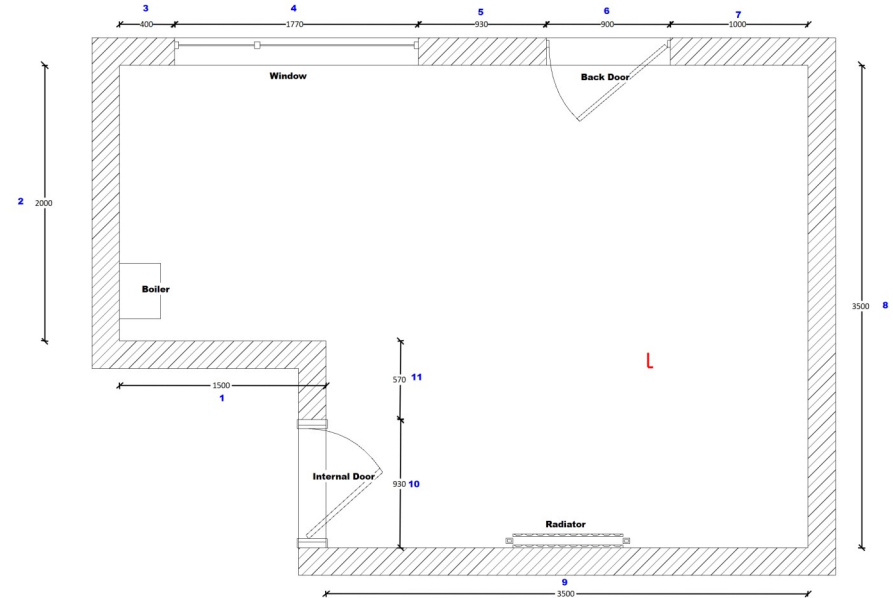
A STEP BY STEP GUIDE

1



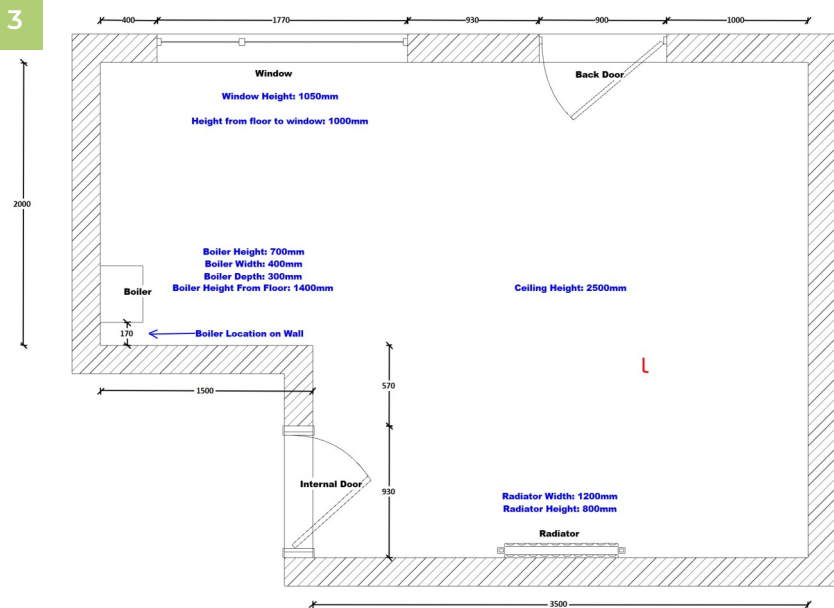
Create a diagram of the room, marking key items such as windows, doors, radiators and boilers.

2



Start in a corner and measure each individual section of wall. Eg. Between corner of room and window, window and door etc. Continue until you've completed the room. NB: *If possible please use metric measurements (mm or cm)*

3



Once you have the room measurements, move to key objects within the room like radiators, boilers fuse boxes etc.

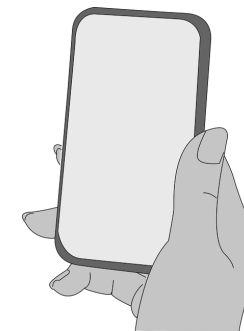
Make sure to get the width, height, depth and position of these items on the wall

Then take the height of the window and distance from the floor.

If safe to do so, also take a measurement of the floor to the ceiling.

4

Take a video tour of the room and photos of any key elements that you feel are important. These include boilers, water tanks, water pipes, fuse boxes, staircase, boxing/columns etc.



Other details you may also wish to note where the existing sink is located and any gas appliances if you have them.